



MEDIZINISCHE
FAKULTÄT
HEIDELBERG

Inaugural Symposium

Program

Opening of the Institute for Medical and Data Ethics

May 12 & 13, 2026



TUE 12 MAY 2026

13:00-13:15 Eva Winkler (IMDE) & Dirk Jäger (NCT Heidelberg):
Welcome and opening remarks

13:15-13:45 **FIRST SESSION: DATA AND AI ETHICS** – Chair: Lukas Kiefer
Lukas J. Meier (Harvard University):
Data-driven clinical ethics consultation – Chatbots and specialised decision-support systems

13:45-14:00 Markus Herrmann (IMDE):
AI – A medical instrument like any other?

14:00-14:30 Coffee Break

14:30-15:00 **SECOND SESSION: GENOME ETHICS** – Chair: Christoph Schickhardt
Ruth Horn (Augsburg University):
Promises, challenges, and benefits of genomics

15:00-15:15 Martin Jungkunz (IMDE):
Genome policy in practice - current work of the EURAT platform

15:15-15:30 Karla Alex (IMDE):
Should genomic newborn screening data be used for research?

(15:30-16:45) Transfer to the Old Lecture Hall, Heidelberg University

EVENING EVENT

with musical accompaniment by “un, deux, trois...”

17:00-17:15 Eva Winkler (IMDE) & Michael Boutros (Heidelberg University):
Welcome and opening remarks

17:15-17:45 Mildred Solomon (Harvard University):
Keynote: Democracy in crisis and the future of bioethics

17:45-18:30 **Expert Panel** - Moderation: Eva Winkler (IMDE)
Mildred Solomon (Harvard University)
Thorsten Moos (Heidelberg University)
Lukas J. Meier (Harvard University)
Ruth Horn (Augsburg University)
Dirk Lanzerath (Bonn University)
Rebecca Brendel (Harvard University)

18:30-19:30 **RECEPTION AT THE BELETAGE**

WED 13 MAY 2026

Eva Winkler (IMDE): 09:00-09:15
Opening of the second day

THIRD SESSION: CLINICAL ETHICS – Chair: Markus Herrmann
Jan Schildmann (Halle-Wittenberg University): 09:15-09:45
Assisted suicide in Germany. Empirical data, normative and practical challenges

Katja Mehlis & Eva Winkler (IMDE): 09:45-10:00
Shared decisions at life's end: Ethical tools for oncology practice

FOURTH SESSION: PARTICIPATION – Chair: Katja Mehlis
Silke Schicktanz (Göttingen University): 10:00-10:30
Participatory medical ethics – Normative and conceptual aspects

Christoph Schickhardt (IMDE): 10:30-10:45
Democratizing biomedical research through participation?

Aline Weis (IMDE) & Cindy Körner (NCT Heidelberg): 10:45-11:00
Patient Involvement in research – Insights and perspectives from the NCT

Coffee Break 11:00-11:45

FIFTH SESSION A: PUBLIC HEALTH ETHICS – Chair: Eva Winkler
Alena Buyx (TU Munich): 11:45-12:15
When ethics meets crisis: Public Health decision-making and distributive justice / priority setting

Julia König (IMDE): 12:15-12:30
Mapping and addressing economic factors in the care of cancer patients

Katja Mehlis (IMDE): 12:30-12:45
Financial toxicity in cancer care: Ethical implications for patients and health systems

FIFTH SESSION B: PUBLIC HEALTH ETHICS

WITH FOCUS ON CHILD ETHICS – Chair: Karla Alex
Eva Winkler (IMDE) & Christian Schaaf (Heidelberg University): 12:45-13:15
Ethics of genomic newborn screening programs

Christoph Schickhardt (IMDE): 13:15-13:30
Children in Public Health

LUNCH AND DEPARTURE 13:30

KEYNOTE SPEAKERS AND PANELISTS

Prof. Rebecca W. Brendel, MD, JD

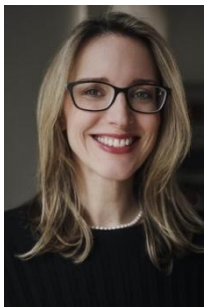
Director of the Center for Bioethics, Harvard Medical School



Rebecca W. Brendel is Director of the Center for Bioethics and Associate Professor of Psychiatry and Frances Glessner Lee Associate Professor of Global Health and Social Medicine in the Field of Legal Medicine at Harvard Medical School. She works clinically as a psychiatrist at Massachusetts General Hospital, where she is the Director of Law and Ethics at the Center for Law, Brain, and Behavior and the Director of Ethics for the Chester M. Pierce Division of Global Psychiatry. Rebecca Brendel holds degrees in medicine and law (MD, JD) and graduated with Honors from both the Pritzker School of Medicine and the University of Chicago Law School. Her research and teaching focuses on issues at the intersection of psychiatry, medicine, law, ethics, and human rights. Rebecca Brendel has held numerous positions in the medical community. She is a past president of the American Psychiatric Association (APA, 2022-2023) and of the Academy of Consultation-Liaison Psychiatry (ACLP, 2018-2019). Currently she is a consultant to the World Psychiatric Association (WPA) Ethics Committee and Chair of the American Medical Association (AMA) Council on Ethical and Judicial Affairs.

Prof. Dr. Alena Buyx

Director of the Institute of History and Ethics in Medicine (IGEM),
TUM School of Medicine and Health, Technical University of Munich



Alena Buyx is Professor of Ethics in Medicine and Health Technologies and Director of the Institute of History and Ethics in Medicine, TUM School of Medicine and Health at the Technical University of Munich (TUM). She is a medical doctor with additional degrees in philosophy and sociology. Her research spans the whole field of biomedical ethics, with a particular focus on ethics of medical innovation and health technologies, research ethics, questions of solidarity and justice in contexts such as public health and health care provision, and novel participatory approaches in biomedicine and beyond. Alena Buyx is part of high-level national and international ethics bodies. From 2019-2020, she was a member of the WHO Expert Advisory Committee on Developing Global Standards for Governance and Oversight of Human Genome Editing, and she served on the German Ethics Council from 2016 to 2024 where she was appointed Chair from 2020 to 2024. Alena Buyx is Member of the German National Academy of Sciences Leopoldina and was honored with the Order of Merit of the Federal Republic of Germany in 2024.

Prof. Dr. Ruth Horn

Deputy Director of the Institute for Ethics and History of Health in Society (IEHHS),
University of Augsburg

Ruth Horn is Professor of Medical Ethics and Deputy Director of the Institute for Ethics and History of Health in Society (IEHHS) at University of Augsburg and Honorary Visiting Senior Research Fellow at the Ethox Centre, University of Oxford. She studied Sociology in Germany (Ludwig-Maximilians University, Munich) and France (University of Paris Diderot). In 2009, she completed her PhD in Sociology of Ethics at the Ecole des Hautes Etudes en Sciences Sociales, Paris. Her research is at the intersection between sociology, bioethics and law/social policy and focuses on ethical questions raised by medical practices and new technologies (e.g., genomics) in different socio-cultural contexts. Ruth Horn is regularly engaging with and contributing to the development of policy and active in various boards and committees. From 2020-2024 she was President of the European Association of Centres of Medical Ethics (EACME). Ruth Horn is Founder and Co-Lead of the UK-FR-D+ GENE Network, a network for researchers, policymakers and practitioners from different countries to reflect on the ethical questions arising from the implementation of large-scale genomic initiatives.



Prof. Dr. Dirk Lanzerath

Director of the German Reference Centre for Ethics in the Life Sciences (DRZE),
University Bonn

Dirk Lanzerath is Professor of Philosophy and Director of the German Reference Centre for Ethics in the Life Sciences (DRZE) at the University of Bonn. He is Honorary Professor of Ethics and Research Ethics at Bonn Rhine-Sieg University of Applied Sciences. Professor Lanzerath holds degrees in philosophy, biology and education. His main research areas include bioethics, environmental ethics, ethics of technology and research ethics. A particular focus of his research is on the relationship between science and society and the question of responsibility of both the individual researchers and the research institutions. Dirk Lanzerath is a member of various boards and committees. Among other things he is the Vice-Chair of ZEKO – Central Ethics Commission of the German Medical Association, Spokesman of the working group "Interdisciplinary Approaches" of the Biodiversity Network Bonn (BION) and Secretary General of the European Network of Ethics Committees (EUREC).



Dr. Lukas J. Meier

Edmond & Lily Safra Center for Ethics, Harvard University &
Center for Bioethics, Harvard Medical School



Lukas J. Meier is a philosopher and ethicist specializing in the intersection of technology, medicine, and the human mind. He is an Associate at the Edmond & Lily Safra Center for Ethics at Harvard University, an Affiliate at the Center for Bioethics at Harvard Medical School, and the current Harvard-Tel Aviv University Exchange Fellow. Lukas Meier studied political science at the University of Göttingen before moving to the University of Oxford to study philosophy. His doctoral thesis, completed at the Universities of St. Andrews and Heidelberg, explored the link between brain death and the philosophical debate on personal identity. His current work focuses on emerging neurotechnologies and artificial intelligence.

Prof. Dr. Thorsten Moos

Dean of the Faculty of Theology, Heidelberg University



Thorsten Moos is Professor of Systematic Theology (Ethics) and Dean of the Theological Faculty at Heidelberg University. He has a background in science and humanities. He studied theoretical physics at the University of Regensburg and the Free University of Berlin and protestant theology at Humboldt University in Berlin and Martin Luther University in Halle-Wittenberg. His research areas include basic concepts and questions of application in the fields of bioethics and medical ethics, theological anthropology, including the concept of illness, political ethics from a theological perspective, and the relationship between theology and other disciplines. Thorsten Moos is one of the Founding Directors of the Camilla and Georg Jellinek Center for Ethics at Heidelberg University and member of various

interdisciplinary committees, including the Central Ethics Committee for Stem Cell Research at the Robert Koch Institute (RKI) and the Ethics Committee for Preimplantation Diagnostics at the Baden-Württemberg State Medical Association. He is a Fellow of the Max Planck School Matter to Life.

Prof. Dr. Christian Schaaf

Director of the Institute for Human Genetics, Heidelberg University Hospital

Christian Schaaf is Professor of Human Genetics at the Medical Faculty of Heidelberg University and Director of the Institute for Human Genetics at Heidelberg University Hospital (UKHD). Christian Schaaf completed his medical studies and training in Heidelberg and Houston, TX, USA and holds a medical doctorate in the field of human genetics. His research focuses on the genetic causes of intellectual disability and autism spectrum disorders. He and his team are responsible for the discovery of several gene mutations that cause disorders. Three disorders bear his name: Schaaf-Yang Syndrome (SYS), Bosch-Boonstra-Schaaf Optic Atrophy Syndrome (BBSOAS) and Marbach-Schaaf Neurodevelopmental Syndrome (MASNS). Christian Schaaf is a member of various committees and advisory boards. Among other things, he is Vice-President of the German Society of Human Genetics (gfh).



Prof. Dr. Silke Schicktanz

Director of the Department of Medical Ethics and History of Medicine, University Medical Center Göttingen, University of Göttingen

Silke Schicktanz is Professor of Ethical and Cultural Studies of Biomedicine and Director of the Department of Medical Ethics and History of Medicine at the University Medical Center Göttingen. She studied biology and philosophy at the University of Tübingen, where her PhD thesis on the ethics of xenotransplantation was approved in 2002. Various research stays and fellowships at UC Berkeley, Tel Aviv University, Delhi University, and Université of Montreal supported her research addressing the interplay of cultural factors and ethical reflection. Furthermore, her work focuses on the globalization of life science research, concepts of collectivity in bioethics, public and stakeholder engagement. Silke Schicktanz is member of the Joint Committee on the Handling of Security-Relevant Research of the German Research Foundation (DFG) and the German National Academy of Sciences Leopoldina, and elected president of the Academy for Ethics in Medicine (AEM), the scientific association for ethics in medicine and health care based in Germany.



Prof. Dr. Jan Schildmann

Director of the Institute for History and Ethics of Medicine,
Martin Luther University Halle-Wittenberg



Jan Schildmann is Professor of Medical Ethics and Director of the Institute for History and Ethics of Medicine at Martin Luther University Halle-Wittenberg. He studied human medicine in Berlin and obtained his doctorate in medicine at Friedrich-Alexander University of Erlangen-Nuremberg. Jan Schildmann holds additional postgraduate degrees in medical law and ethics (King's College London) and philosophy in the European context (University of Hagen). He is a specialist in internal medicine with additional qualification in palliative medicine. His main research areas include ethics and evidence in clinical medicine, research ethics, theoretical foundations of medical ethics, allocation ethics, and ethics in the neurosciences. Jan Schildmann is active on multiple committees. Among others, he is

Member of the the Board of ZEKO – Central Ethics Commission of the German Medical Association, Member of the Board of the Academy for Ethics in Medicine (AEM), and Chair of the Scientific Advisory Board of the Institute for Quality and Efficiency in Healthcare (IQWiG).

Prof. Mildred Z. Solomon, EdD

Director of HMS Fellowships in Bioethics, Harvard Medical School &
President Emerita of The Hastings Center for Bioethics



Mildred Z. Solomon is Professor of Global Health and Social Medicine (part-time) at Harvard Medical School and President Emerita of The Hastings Center for Bioethics, where she served as president for 11 years. At Harvard, Professor Solomon is core founding faculty of the HMS Center for Bioethics, where she directs the school's online and in-person Fellowships in Bioethics and has trained over 300 health professionals from the United States and around the world. Professor Solomon's own research covers many topics – including ethics of end-of-life care, medical professionalism, and responsible conduct of research. Recent publications include a special report on trustworthiness in science and health care and a second report, Democracy in Crisis, on the erosion of democratic norms in the United

States and its implications for the field of bioethics. Prior to her role at The Hastings Center, she was Senior Director for Implementation Science at the Association of American Medical Colleges. Frequently cited in the media, including the Wall Street Journal, National Public Radio, New York Review of Books, The Daily Beast, Forbes, Science News, The Scientist and other outlets, Professor Solomon holds a B.A. from Smith College and a doctorate in educational research from Harvard University.

Prof. Dr. Dr. Eva Winkler

Director of the Institute for Medical and Data Ethics, Faculty of Medicine,
Heidelberg University

Eva Winkler is Professor of Translational Medical Ethics, Director of the Institute for Medical and Data Ethics (IMDE), and Vice-Dean for Digitalization at the Medical Faculty of Heidelberg University. She is a specialist in hematology and oncology, Member of the Board of Directors of the National Center for Tumor Diseases (NCT) Heidelberg and works as a senior physician in the Department of Medical Oncology at Heidelberg University Hospital (UKHD). Eva Winkler holds a doctorate in cancer research and a PhD in medical and health ethics. Eva Winkler's main research areas are clinical ethics, research ethics, and public health ethics. Eva Winkler is the Scientific Director and Spokesperson of EURAT (interdisciplinary platform for Ethical and Legal Aspects of Translational Medicine) and one of the Founding Directors of the Camilla and Georg Jellinek Center for Ethics at Heidelberg University. As an expert, Eva Winkler is active in various committees. Among others, she is Vice-Chair of the German Ethics Council, Chair of ZEKO – Central Ethics Commission of the German Medical Association, Vice-President of the Academy for Ethics in Medicine (AEM), Member of the Health Finance Commission (FKG) of the Federal Ministry of Health (BMG), and Member of the German National Academy of Sciences Leopoldina.



OPENING REMARKS AND ADDITIONAL SPEAKERS

Prof. Dr. Michael Boutros

Dean of the Faculty
of Medicine,
Heidelberg
University



Prof. Dr. Dirk Jäger

Director of the
Department of
Medical Oncology,
UKHD & Managing
Director, NCT
Heidelberg



Dr. Cindy Körner

Spokesperson of
the Patient
Research Council,
NCT Heidelberg



IMDE HEIDELBERG – OUR TEAM



Dr. Christoph Schickhardt

Philosophy & Ethics



Dr. Katja Mehlis

Social Sciences



Dr. Markus Herrmann

Philosophy &
Scientific Coordination



Karla Alex

Philosophy, Ethics &
German Studies



Dr. Martin Jungkuz

Philosophy &
Scientific Coordination



Dr. Julia König

Oncology & Medical
Ethics



Dr. Aline Weis

Social Sciences



Lukas Kiefer

Philosophy & Scientific
Coordination



Sarina Carter

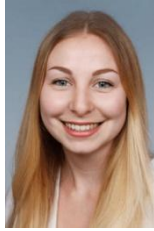
Social Sciences



Isabell Haase-Saebel

Philosophy & Ethics

Laura Heiligenthal
Social Sciences



Dr. Bettina Niederhauser
Philosophy & Ethics



Niamh Sulzbach
Philosophy & Ethics



Dr. Yi Jiao Angelina Tian
Social Sciences



Mathilda Weeke
Social Sciences



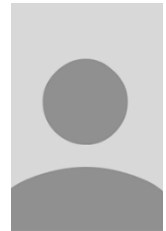
Aylen Horel
Team Assistant



Katarzyna Karpa
Biological Sciences &
Psychology



Neil Brinkmann
Team Assistant



MD CANDIDATES AND STUDENT ASSISTANTS

Rebecca Boekels (MD Candidate)
Andreas Wabro (MD Candidate)
Franz Kummer (Student Assistant)
Julia Sanchez (Student Assistant)

Katja Schabet (MD Candidate)
Sophie Büntig (Student Assistant)
Johanna Müller (Student Assistant)
Jannik Stichs (Student Assistant)

ONLINE PROGRAM



CONTACT

Institut für Medizin- und Datenethik
Tiergartenstr. 15
69121 Heidelberg
IMDE-office@med.uni-heidelberg.de
06221 56 38732 / 06221 56 310813
www.imde-heidelberg.de

